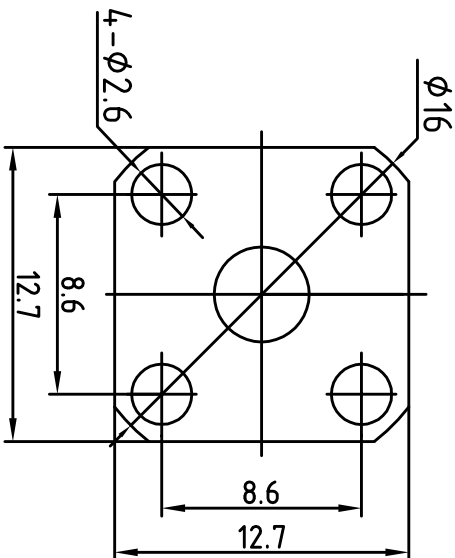
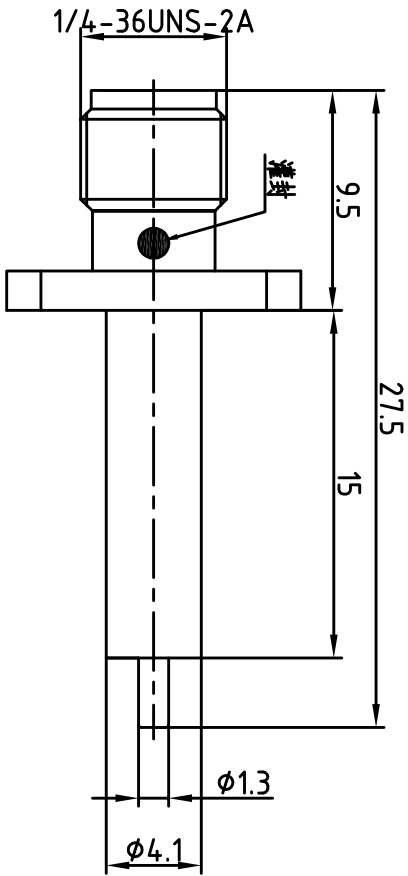


This document contains proprietary information and such information may not be disclosed to others for any purposes, not used for sales/marketing/procurement purposes without written permission

REV	DESCRIPTION OF REVISION	ECN NO.	BY	DATE	APPROVED
A	Initial Release		T.HoJyun	16/8/16	16/8/16



1 Electrical

- 1.1 Impedance 50Ω
- 1.2 Frequency DC~18GHz
- 1.2 Dielectric withstanding voltage 1000V(volts RMS)
- 1.3 Center contact resistance ≤ 3MΩ
- 1.4 Outer contact resistance ≤ 2MΩ
- 1.5 Insulation resistance: ≥5000MΩ
- 1.6 VSWR 1.2:1

3 Materials&plating

- 3.1 Body: Brass; Gold, plated
- 3.2 Insulator: Teflon
- 3.3 Contact Pin: Beryllium Copper; Gold,plated

2 Environmental&Mechanical


- 2.1 Temperature range -55℃~155℃
- 2.2 RoHS Compliant Yes
- 2.3 Durability >500 cycles

Notes:

- 1. ALL SPECIFICATIONS ARE SUBJECT TO CHANGE NOTICE AT ANY TIME
- 2. CUSTOMER OUTLINE DRAWING FOR REFERENCE ONLY

DRAWN: T.HoJyun 16/8/16
ENGINEER: C.Too 16/8/16
APPROVED: W.Qiang 16/8/16
TOLERANCES UNLESS OTHERWISE SPECIFIED
X ±0.30
XX ±0.20
XXX ±0.10
ANGLES 5°

TITLE: SMA-KFD22
SMA Female Flange Connector
Mount
PART NO: TRU-SMA1721024


www.terrill.com
 DIMENSION IN MILLIMETERS (mm)
 SIZE: A4 SCALE: N/A SHEET: 1/1 REV: A