

This document contains proprietary information and such information may not be disclosed to others for any purposes,
not used for sales/marketing/procurement purposes without written permission

REV	DESCRIPTION OF REVISION	ECN NO.	BY	DATE	APPROVED
A	Initial Release	—	T. Shihua	12/7/13	12/7/13

1 Electrical

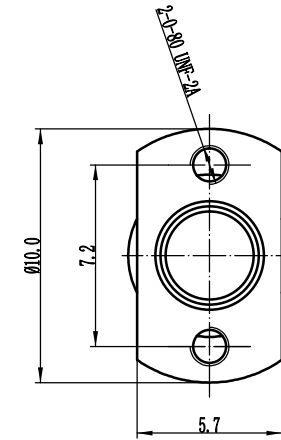
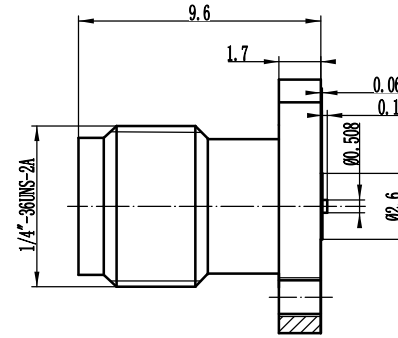
- 1.1 Impedance 50 Ω
- 1.2 Frequency DC~18GHz
- 1.2 Dielectric withstanding voltage 1000V(volts RMS)
- 1.3 Center contact resistance ≤ 3MΩ
- 1.4 Outer contact resistance ≤ 2MΩ
- 1.5 Insulation resistance: ≥5000MΩ
- 1.6 VSWR 1.20:1

2 Environmental&Mechanical

- 2.1 Temperature range -45℃~85℃
- 2.2 RoHs Compliant
- 2.3 Durability >500 cycles



3 Materials&plating

- 3.1 Body: Stainless Steel, Passivated
- 3.2 Insulator: Teflon
- 3.3 Contact Pin: Beryllium Copper Gold plated



Notes:

- 1. ALL SPECIFICATIONS ARE SUBJECT TO CHANGE NOTICE AT ANY TIME
- 2. CUSTOMER OUTLINE DRAWING FOR REFERENCE ONLY

<p>DRAWN: T. Shihua 12/07/13</p> <p>ENGINEER: C. Tao 12/07/13</p> <p>APPROVED: W. Qiang 12/07/13</p> <p>TOLERANCES UNLESS OTHERWISE SPECIFIED</p> <p>X ±0.50</p> <p>X ±0.20</p> <p>XX ±0.10</p> <p>ANGLES ±1°</p>	<p>TITLE:</p> <p>RF Coaxial Connector</p> <p>SMA Female flange Conn. For Terminal</p>	<p> ®</p> <p>www.trhf.com</p> <p> DIMENSION IN MILLIMETERS (mm)</p>		
<p>PART NO: ISMA-KFD2G</p>	<p>SIZE: A4</p>	<p>SCALE: N/A</p>	<p>SHEET: 1/1</p>	<p>REV: A</p>