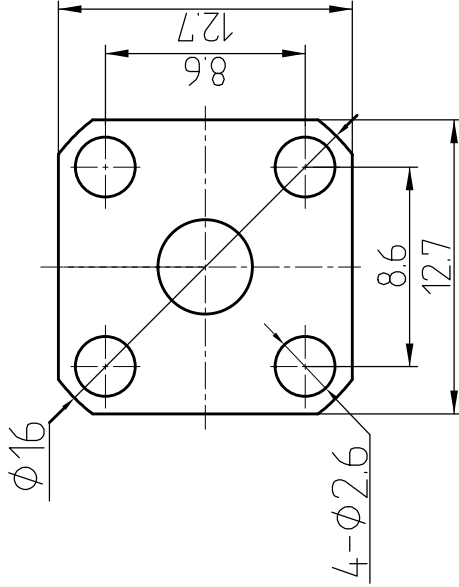
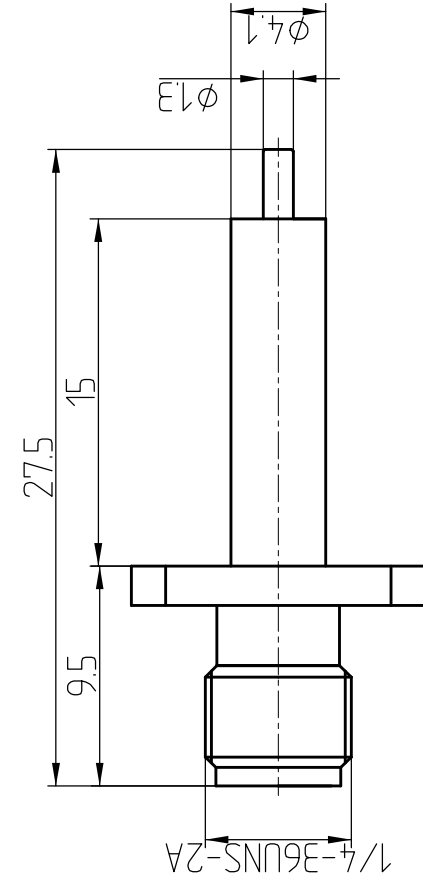


This document contains proprietary information and such information may not be disclosed to others for any purposes, not used for sales/marketing/procurement purposes without written permission



- 1. Electrical
 - 1.1 Impedance: 50 Ω
 - 1.2 Frequency: DC ~ 18GHz
 - 1.3 Dielectric withstanding voltage: 1000V (rms)
 - 1.4 Center contact resistance: < 3MΩ
 - 1.5 Outer contact resistance: < 2MΩ
 - 1.6 Insulation resistance: > 5000MΩ
 - 1.7 VSWR: 1.2:1
- 2. Environmental & Mechanical
 - 2.1 Temperature range: -45°C ~ 125°C
 - 2.2 RoHS Compliant: Yes
 - 2.3 Durability: > 500 cycles
- 3. Materials & Plating
 - 3.1 Body: Brass; Gold, plated
 - 3.2 Insulator: Teflon
 - 3.3 Contact Pin: Beryllium Copper; Gold, plated

Notes:

- 1. ALL SPECIFICATIONS ARE SUBJECT TO CHANGE NOTICE AT ANY TIME
- 2. CUSTOMER OUTLINE DRAWING FOR REFERENCE ONLY

| | | | |
|---------------------------------------|-------|-----------------------------------|------------|
| DRAWN: T.Hoàn 16/8/16 | | TITLE: RF Coaxial Connector | |
| ENGINEER: C.Tào 16/8/16 | | SMA Female Flange Connector Mount | |
| APPROVED: W.Dương 16/8/16 | | www.terulal.com | |
| TOLERANCES UNLESS OTHERWISE SPECIFIED | | DIMENSION IN MILLIMETERS (mm) | |
| X | +0.20 | SIZE: A4 | SHEET: 1/1 |
| XX | +0.10 | SCALE: N/A | REV: A |
| ANGLES | ±1° | PART NO: SMA-RFD22C | |