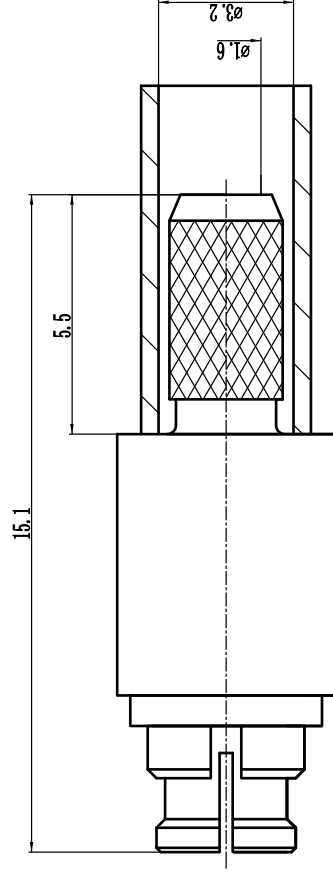


This document contains proprietary information and such information may not be disclosed to others for any purposes, not used for sales/marketing/procurement purposes without written permission

- 1 Electrical
- 1.1 Impedence 50 Ω
 - 1.2 Frequency DC ~6GHz
 - 1.2 Dielectric withstanding voltage 1000V(volts RMS)
 - 1.3 Center contact resistance $\leq 3M\Omega$
 - 1.4 Outer contact resistance $\leq 2M\Omega$
 - 1.5 Insulation resistance: $\geq 5000M\Omega$
 - 1.6 VSWR 1.30:1

- 2 Environmental&Mechanical
- 2.1 Temperature range -45 $^{\circ}$ C~125 $^{\circ}$ C
 - 2.2 RoHS Compliant
 - 2.3 Durability >500 cycles

- 3 Materials&plating
- 3.1 Body: Brass,Gold Plated
 - 3.2 Insulator: Teflon
 - 3.3 Contact Pin: Beryllium Copper, Gold plated
 - 3.4 Spring Contact: Beryllium Copper, Gold plated



REV	DESCRIPTION OF REVISION	ECN NO.	BY	DATE	APPROVED
A	Initial Release		T. Shihua	14/08/18	14/08/18

Notes:

- 1. ALL SPECIFICATIONS ARE SUBJECT TO CHANGE NOTICE AT ANY TIME
- 2. CUSTOMER OUTLINE DRAWING FOR REFERENCE ONLY

DRAWN : T. Shihua 14/08/18

ENGINEER: C. Tao 14/08/18

APPROVED : W. Qiang 14/08/18

TOLERANCES UNLESS OTHERWISE SPECIFIED

X +0.50

XX +0.20

ANGLES $\pm 1^{\circ}$

TITLE:

RF Coaxial Connector

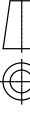
SMP Female Conn. for RGS16

Cable

PART NO: SMP-K3Y



www.rfconnector.com



DIMENSION IN MILLIMETERS (mm)

SIZE: A4

SCALE: N/A

SHEET: 1/1

REV: A