

This document contains proprietary information and such information may not be disclosed to others for any purposes, not used for sales/marketing/procurement purposes without written permission

| REV | DESCRIPTION OF REVISION | ECN NO. | BY       | DATE    | APPROVED |
|-----|-------------------------|---------|----------|---------|----------|
| A   | Initial Release         | —       | T.Haiyun | 23/5/07 | 23/5/07  |

1 Electrical

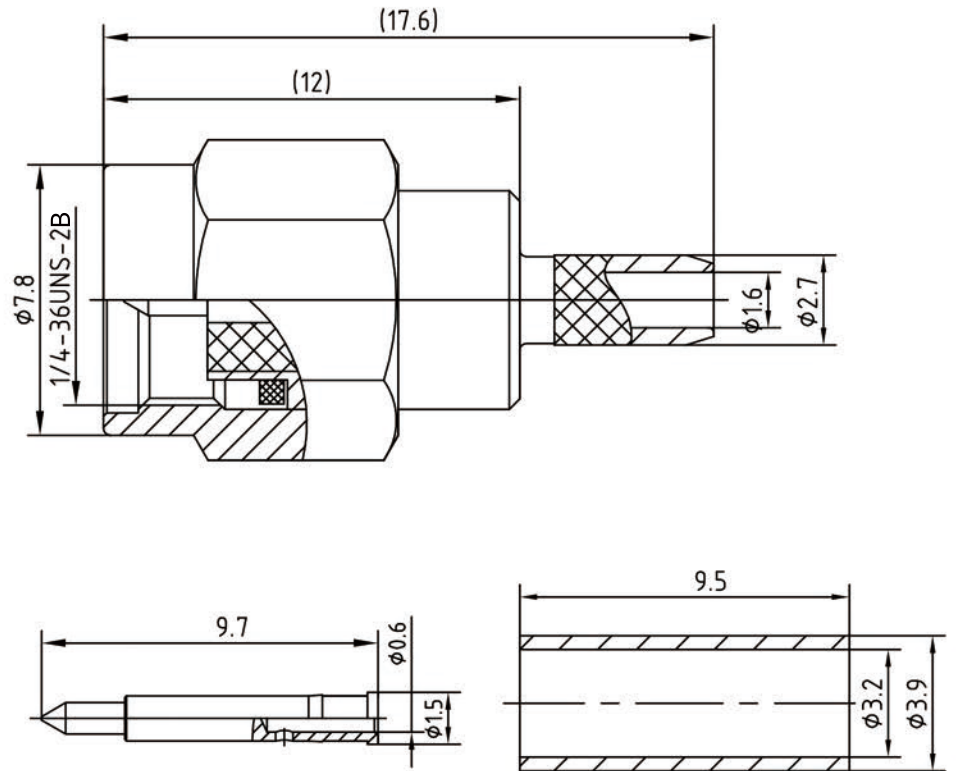
- 1.1 Impedence 50Ω
- 1.2 Frequency DC~6GHz
- 1.3 Dielectric withstanding voltage 1000V(volts RMS)
- 1.4 Center contact resistance ≤ 3MΩ
- 1.5 Outer contact resistance ≤ 2MΩ
- 1.6 Insulation resistance: ≥5000MΩ

2 Environmental&Mechanical

- 2.1 Temperature range -40℃~+70℃
- 2.2 RoHs Compliant
- 2.3 Durability >500 cycles



3 Materials&plating

- 3.1 Body: Brass; Nickel plated
- 3.2 Insulator: Teflon
- 3.3 Contact Pin: Brass, Gold plated
- 3.4 Nut: Brass, Nickel plated
- 3.5 Gasket: Silicon Rubber ( red color)
- 3.6 Ferrule: Copper, Nickel plated



Notes:

- 1.ALL SPECIFICATIONS ARE SUBJECT TO CHANGE NOTICE AT ANY TIME
- 2.CUSTOMER OUTLINE DRAWING FOR REFERENCE ONLY

|   |  |   |
|---|--|---|
| DRAWN: T.Haiyun 23/5/07   | TITLE:                                       | <br>www.t-rely.com.cn          |
| ENGINEER: C.Tao 23/5/07   | SMA-J3B                                      |   |
| APPROVED: W.Qiang 23/5/07   | SMA Male Str. Conn. for RG174<br>Cable Crimp |   |
| TOLERANCES UNLESS OTHERWISE SPECIFIED<br>X ±0.50<br>.X ±0.20<br>.XX ±0.10<br>ANGLES ±1° |  |  DIMENSION IN MILLIMETERS (mm) |
| PART NO: TRL-SMAM-490861  | SIZE: A4                                     | SCALE: 1:1  |
|   |  | SHEET: 1/1  |
|   |  | REV: A  |