

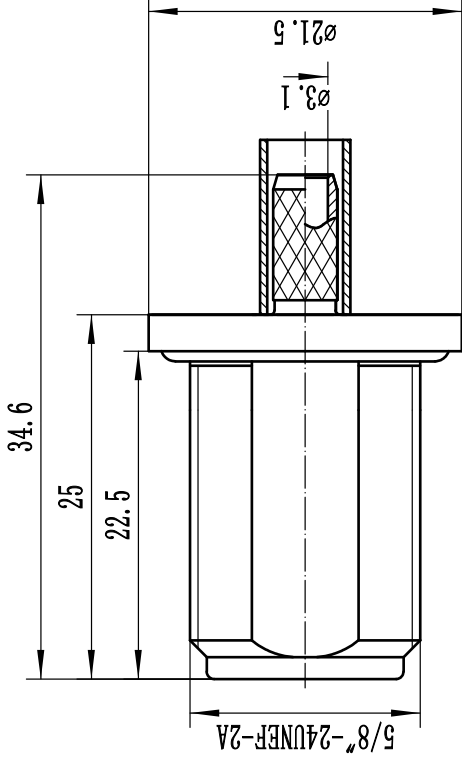
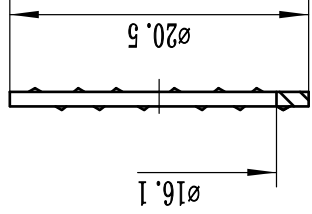
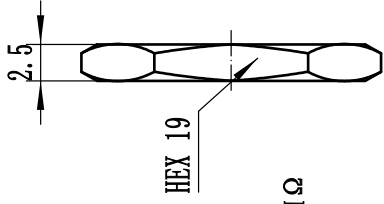
This document contains proprietary information and such information may not be disclosed to others for any purposes, not used for sales/marketing/procurement purposes without written permission

## 1 Electrical

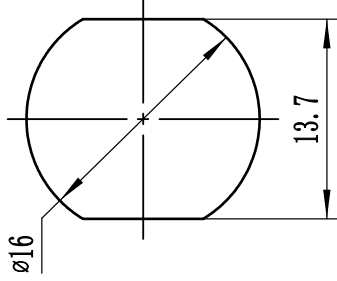
- 1.1 Impedance: 50 Ω
- 1.2 Frequency: DC~6GHz
- 1.3 VSWR:  $\leq 1.30$
- 1.4 Insulation resistance:  $\geq 5000M\Omega$
- 1.5 Dielectric strength: 1500V
- 1.6 Contact resistance
  - Center contact  $\leq 1.5M\Omega$
  - Outer contact  $\leq 0.2M\Omega$

## 2 Materials&Finish

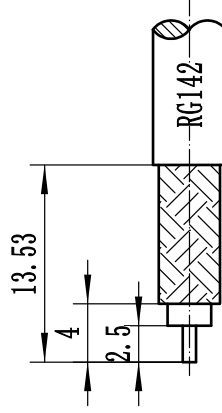
- 2.1 Inner Contact: Bronze, Gold plated
- 2.2 Outer Contact: Brass, Nickel plated
- 2.3 Insulators: PTFE



Recommended opening size



Recommended cable stripping dimensions



### Notes:

- 1. ALL SPECIFICATIONS ARE SUBJECT TO CHANGE NOTICE AT ANY TIME
- 2. CUSTOMER OUTLINE DRAWING FOR REFERENCE ONLY

REV	DESCRIPTION OF REVISION	TEL. NO.	BY	DATE	APPROVED
A	Initial Release		T. Shihua	01/03/2022	01/03/2022

DRAWN: T. Shihua 01/03/2022		TITLE	
ENGINEER: C. Tao 01/03/2022		RF Coaxial Connector	
APPROVED: W. Qiang 201/03/2022		N Female For RG142 Cable	
TOLERANCES UNLESS OTHERWISE SPECIFIED		DIMENSION IN MILLIMETERS (mm)	
X	$\pm 0.50$		
.X	$\pm 0.20$		
.XX	$\pm 0.10$		
ANGLES $\pm 1^\circ$		SIZE: A4	SCALE: 2:1
PART NO: N-KY5DY		SHEET: 1/1	REV: VA

