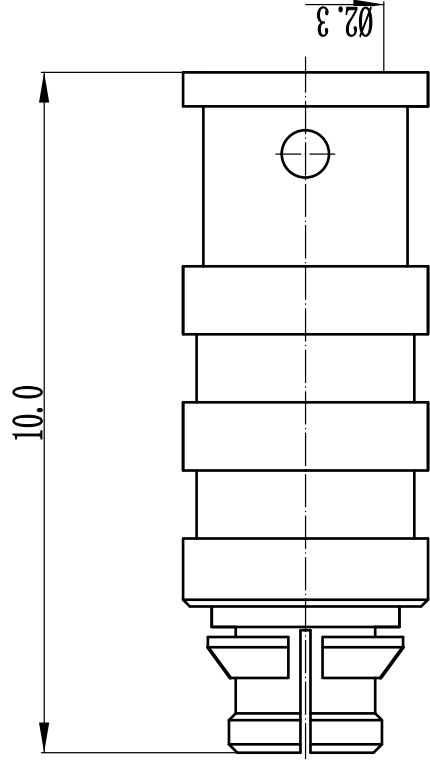


This document contains proprietary information and such information may not be disclosed to others for any purposes, not used for sales/marketing/procurement purposes without written permission

- 1 Electrical
  - 1.1 Impedence: 50  $\Omega$
  - 1.2 Frequency range: DC-18GHz
  - 1.3 Working voltage:  $\leq 335V$
  - 1.2 Dielectric withstanding voltage: 500V(volts RMS)
  - 1.5 Insulation resistance:  $\geq 5000M\Omega$
  - 1.7 Center contact resistance:  $\leq 6M\Omega$
  - 1.8 Outer contact resistance:  $\leq 2M\Omega$

- 2 Environmental&Mechanical
  - 2.1 Temperature range:  $-40^{\circ}C \sim 85^{\circ}C$
  - 2.2 RoHS Compliant
  - 2.3 Durability: 100 mating cycles



- 3 Materials&plating
  - 3.1 Body: Beryllium-copper, Gold Plated
  - 3.2 Insulator: Teflon
  - 3.3 Contact Pin: Beryllium-copper, Gold plated



REV	DESCRIPTION OF REVISION	ECN NO.	BY	DATE	APPROVED
A	Initial Release		T. Shihua	2/4/15	2/4/15

Notes:

1. ALL SPECIFICATIONS ARE SUBJECT TO CHANGE NOTICE AT ANY TIME
2. CUSTOMER OUTLINE DRAWING FOR REFERENCE ONLY

DRAWN : T. Shihua 2/4/15 ENGINEER : C. Tao 2/4/15 APPROVED : W. Qiang 2/4/15 TOLERANCES UNLESS OTHERWISE SPECIFIED X $\pm 0.50$ .X $\pm 0.20$ .XX $\pm 0.10$ ANGLES $\neq \text{°}$	TITLE: RF Coaxial Connector SMP Female Conn. For .086 Cable PART NO: SSMP-KB2	 www.qrl.com DIMENSION IN MILLIMETERS (mm)  SIZE: A4 SCALE: N/A SHEET: 1/1 REV: A
--	---	--