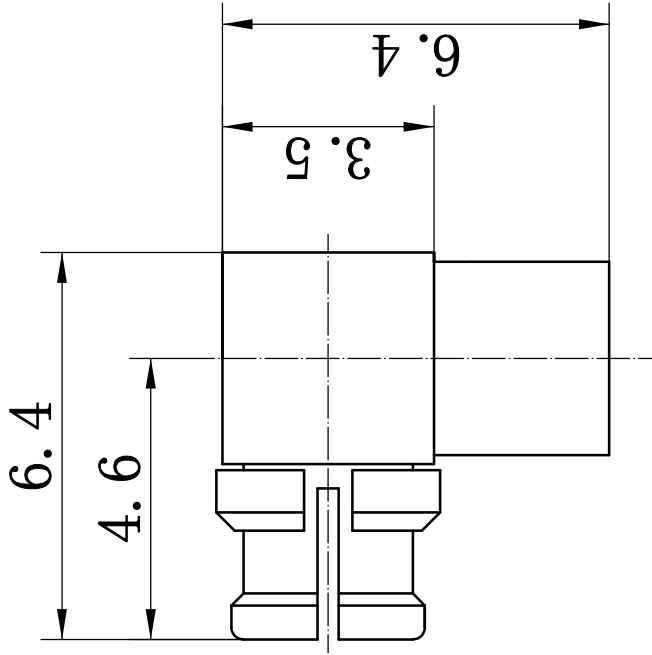
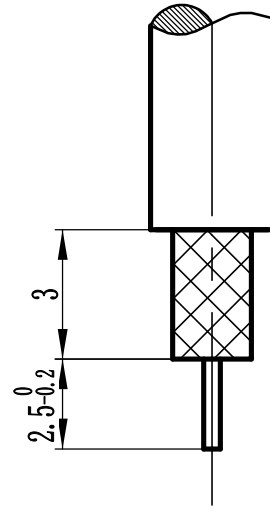


This document contains proprietary information and such information may not be disclosed to others for any purposes, not used for sales/marketing/promocement purposes without written permission



Recommended Cable Stripping



Notes:

1. ALL SPECIFICATIONS ARE SUBJECT TO CHANGE NOTICE AT ANY TIME
2. CUSTOMER OUTLINE DRAWING FOR REFERENCE ONLY

REV	DESCRIPTION OF REVISION	ECN NO.	BY	DATE	APPROVED
A	Initial Release		T. Shihua	2/4/15	2/4/15

- 1 Electrical
 - 1.1 Impedence 50 Ω
 - 1.2 Frequency range: DC~18GHz
 - 1.3 VSWR 1.45: 1
- 2 Environmental&Mechanical
 - 2.1 Temperature range -40°C~125°C
 - 2.2 RoHS Compliant
 - 2.3 Durability 100 mating cycles
 - 2.4 Engagement force: 67N max
 - 2.5 Disengagement force: 22N min
 - 2.6 Axial retention force: 7N min

- 3 Materials&plating
 - 3.1 Body: Beryllium-copper, Gold Plated
 - 3.2 Insulator: Teflon
 - 3.3 Contact Pin: Beryllium-copper, Gold plated

DRAWN: T. Shihua 2/4/15		TITLE: RF Coaxial Connector	
ENGINEER: C. Tao 2/4/15		SMP Female Right Angle Conn. For .086 Cable	
APPROVED: W. Qiang 2/4/15		SCALE: N/A	
TOLERANCES UNLESS OTHERWISE SPECIFIED		DIMENSION IN MILLIMETERS (mm)	
X	±0.50	SHEET: 1/1	
.X	±0.20	REV: A	
.XX	±0.10	SIZE: A4	
ANGLES	±1°	PART NO: SMP-KWB2E	



SCALE: N/A

SHEET: 1/1

REV: A